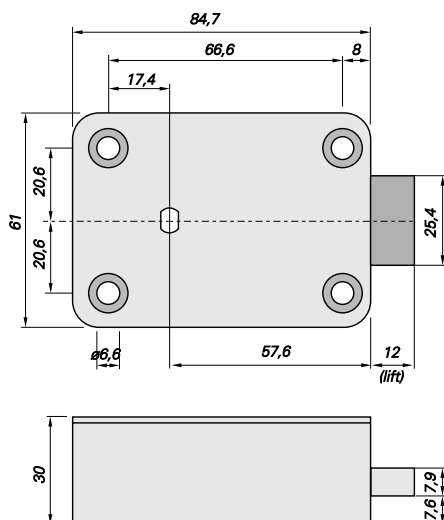
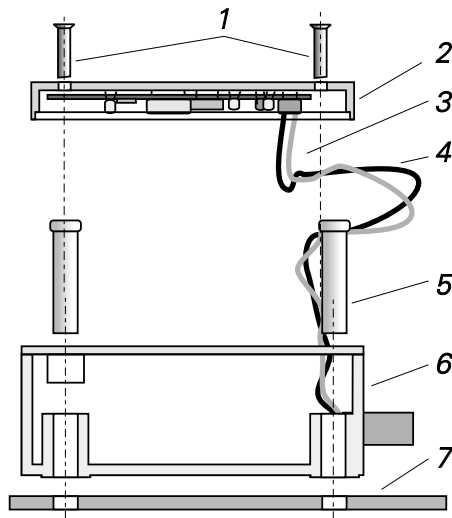
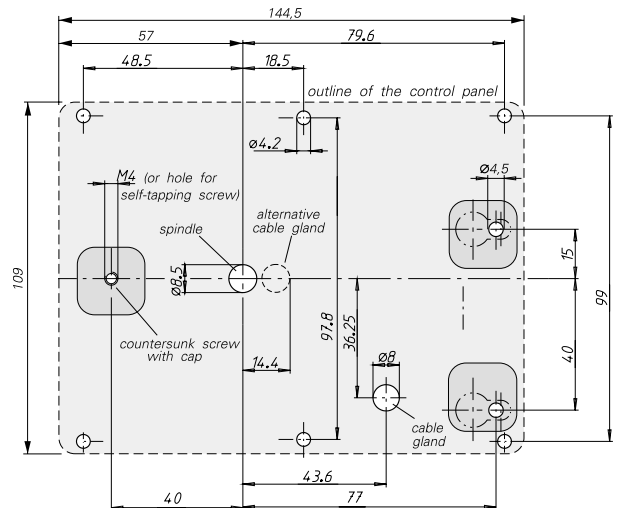


## Mounting instructions for electronic locks E2000, E4000 and E6000 (version 5.2)

### Mounting the control panel

Mount control panel by screwing it on through the holes in the plastic part. Make absolutely sure the cables are routed without any tensile stress. Please note that for some products the cross-sections of the boxouts required for routing of the electric cables are not allowed to be larger than 100 mm<sup>2</sup>. Any components located behind the control panel (i.e. the safe door) must not come into contact with the rear of the keypad PCB. The earth cable of the control panel on lock type E6000 has to be hooked up to the mass potential of the safe. For applications in Sweden maneuvering organs should be mounted so as to impede access by detection means from the front (see Swedish standard SS 3492).



### Mounting the electro-mechanical locking assembly

There are no restrictions as to where the assembly should be mounted. Even so, make sure the lateral angle of deviation of the drive spindle does not exceed 2°. Protect the lock module, as well as the electronics, against direct or indirect access from outside by mounting adequately dimensioned armoring. There must be at least two spaced steel plates, with a minimum thickness of 3 mm each, between the lock module and the outer surface of the door. Take the necessary precautions to stop dirt, dust or humidity from entering the locking assembly while it is mounted. The electric cable must not be subjected to tensile stress, not even during installation. The locking assembly must not be oiled, greased or varnished. To mount the lock module, unscrew the two screws 1) and remove the housing of the electronic components (2) and the electronic module (3). Carefully put these parts to the side as far as the length of connecting cable (4) will allow. The lock (6) can now be fastened to the mounting surface (7) with the four screws (5).

*N.B.*

Please note that the lock can only function well, if the relative humidity is kept below 95 % (non-condensating). This means that the concrete structure bordering on the protected area must be dry.

